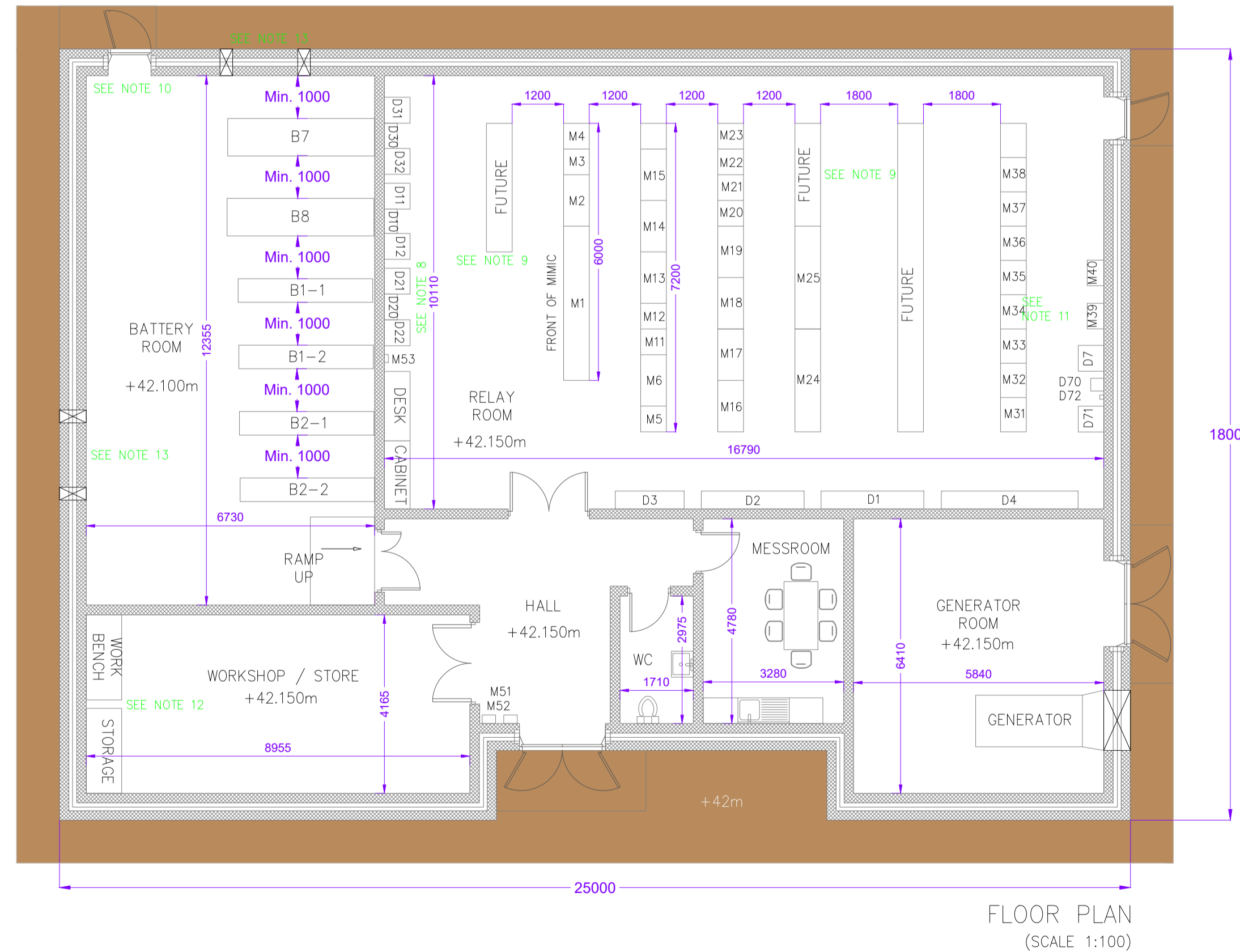
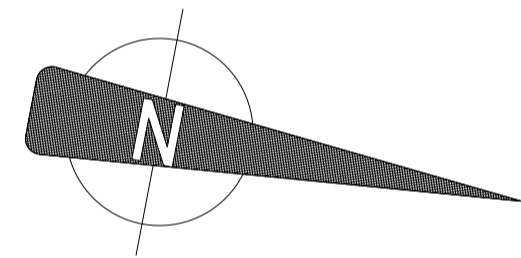
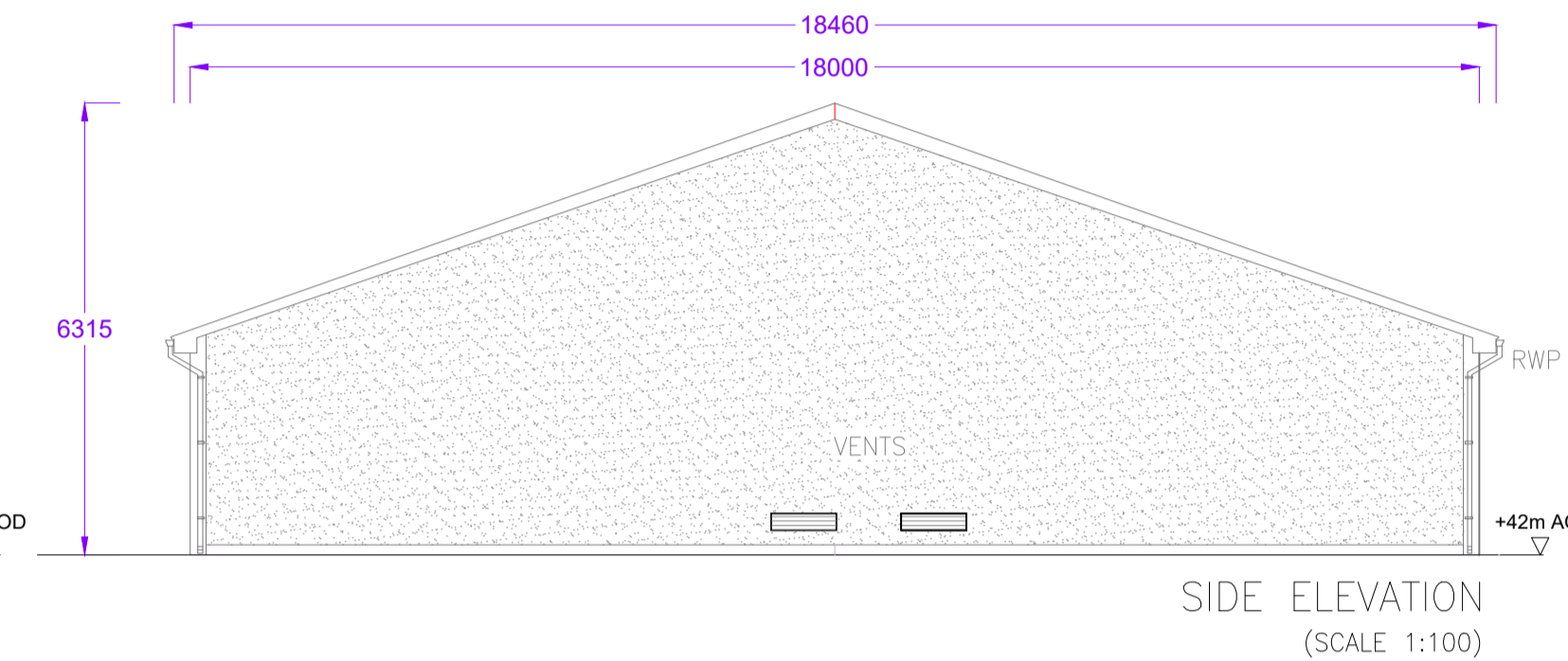
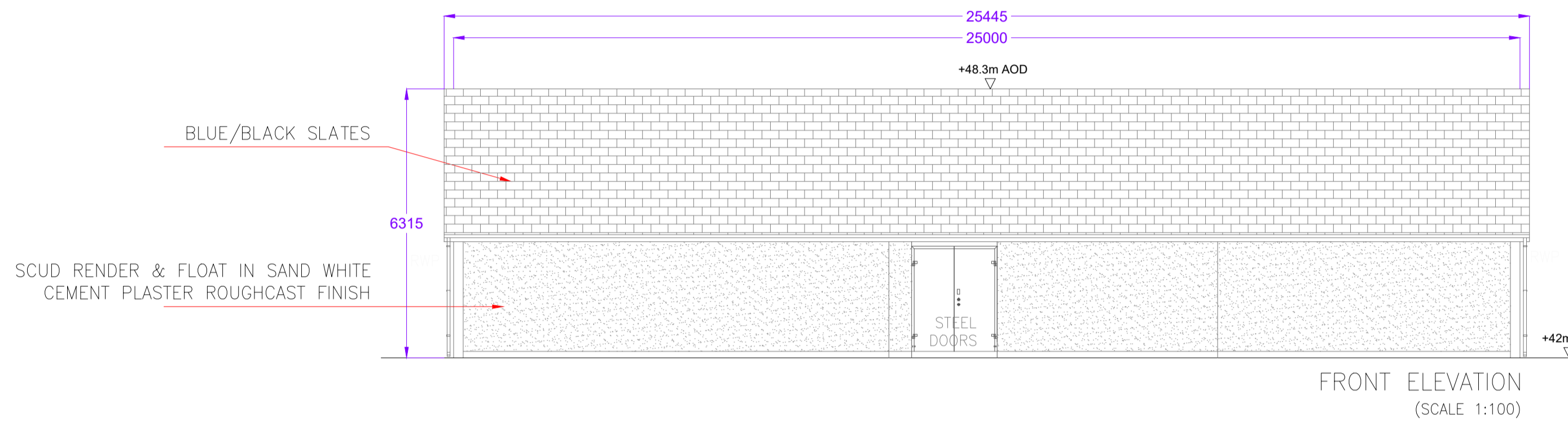
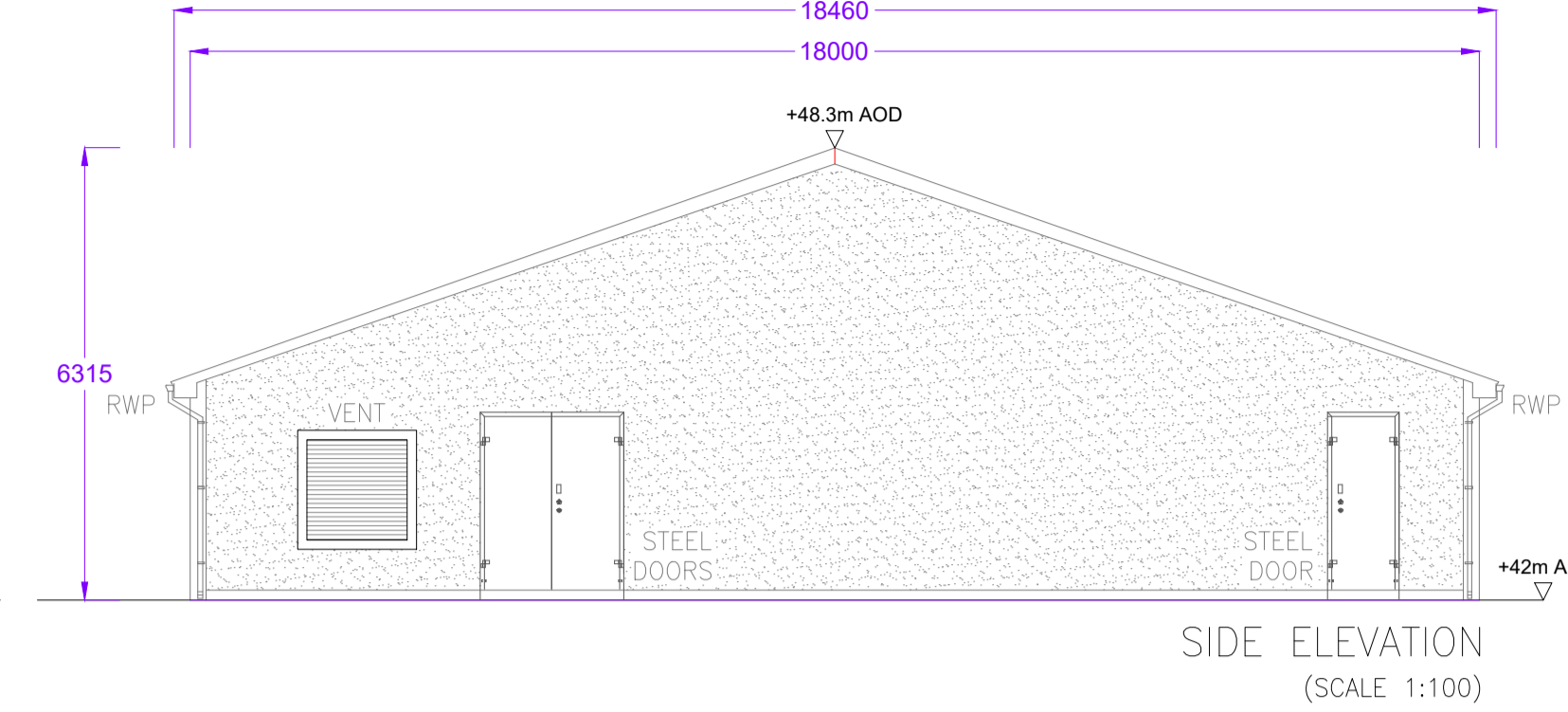
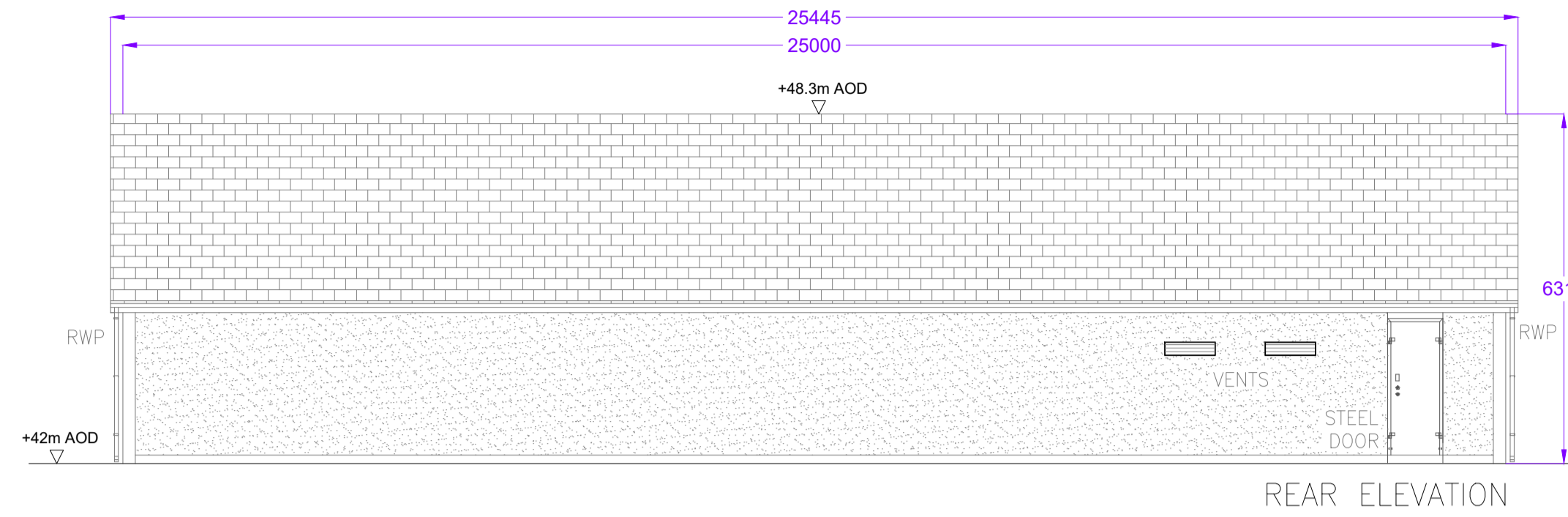


- UNITS SHOWN ARE IN MILLIMETERS.
- THE EIRGRID BUILDING IS BASED OFF THE LATEST STANDARD (XDN-CR-STND-H-001-R01 001).

I/R	DATE	DESCRIPTION
P3	01/12/2023	FOR PLANNING
P2	28/10/2022	CLIENT COMMENTS
P1	07/10/2022	CLIENT COMMENTS
P0	30/09/2022	FIRST ISSUE



NOTE 1:
THIS DRAWING IS PRODUCED FOR INFORMATION ONLY.

NOTE 2:
THIS DRAWING IS BASED ON TYPICAL REQUIREMENTS FOR A STANDARD 8 BAY RING-TYPE AIS 110kV SUBSTATION WITH NON SCS CONTROL.

NOTE 3:
ALL DIMENSIONS AND REFERENCES GIVEN ARE INDICATIVE AND SHOULD NOT BE USED AS A DETAILED DESIGN.

NOTE 4:
FOR MINIMUM CABINET DIMENSIONS, REFER TO EIRGRID FUNCTIONAL SPECIFICATION XDS-GFS-07-001.

NOTE 5:
FOR MINIMUM ACCESS & EGRESS REQUIREMENTS, REFER TO EIRGRID FUNCTIONAL SPECIFICATION XDS-GFS-00-001.

NOTE 6:
TELECOMS CABINETS TO BE ARRANGED IN LINE WITH TELECOMS PROJECT SPECIFIC REQUIREMENTS.

NOTE 7:
TELECOMS CABINETS, EXCEPT DCC RTU, TO BE SUPPLIED BY ESNB/ESB TELECOMS ON THE BEHALF OF EIRGRID/ESBN. ALL OTHER CABINETS TO BE SUPPLIED BY THE CUSTOMER.

NOTE 8:
BATTERY FUSE BOXES TO BE MOUNTED ON WALL ADJACENT TO BATTERY ROOM.

NOTE 9 (AS ILLUSTRATED ON DRAWING):
ADDITIONAL SPACE IS REQUIRED FOR FUTURE PROTECTION AND TELECOMS CABINETS.

NOTE 10 (AS ILLUSTRATED ON DRAWING):
THE REQUIREMENT FOR AN EXTERNAL FIRE ESCAPE FROM THE BATTERY ROOM SHALL BE DETERMINED BASED ON DETAILED DESIGN AND LOCAL AUTHORITY REQUIREMENTS.

NOTE 11 (AS ILLUSTRATED ON DRAWING):
A TELECOMS EARTH BAR SHALL BE INSTALLED IN CLOSE PROXIMITY TO THE DCC RTU.

NOTE 12 (AS ILLUSTRATED ON DRAWING):
THE WORKSHOP SHALL CONTAIN A HEAVY DUTY WORK BENCH FITTED WITH A VICE AND SUITABLE SHELVING/STORAGE FACILITIES TO HOUSE ALL NECESSARY TOOLS, SPARES AND ACCESSORIES FOR THE SUBSTATION.

NOTE 13 (AS ILLUSTRATED ON DRAWING):
SCREENED VENTS (2 HIGH LEVEL AND 2 LOW LEVEL) ARE TO BE INSTALLED IN THE BATTERY ROOM AS PER IEC 62485-2 ON ADJACENT EXTERNAL WALLS.

NOTE 14 (AS ILLUSTRATED ON DRAWING):
ONLY SINGLE ROW BATTERY STANDS MAY BE LOCATED AGAINST A WALL.

NOTE 15 (AS ILLUSTRATED ON DRAWING):
NO ELECTRICAL EQUIPMENT (INCL. BATTERIES) SHALL BE INSTALLED DIRECTLY IN FRONT OF VENTS.

NOTE 16:
SEPARATE CUSTOMER INTERFACE CABINETS SHALL BE INSTALLED FOR EACH CUSTOMER TRANSFORMER.

This drawing has been prepared for the use of AECOM's client. It may not be used, modified, reproduced or relied upon by third parties, except as agreed by AECOM or as required by law. AECOM accepts no responsibility, and denies any liability, whatsoever, to any party that uses or relies on this drawing without AECOM's express written consent. Do not scale this document. All measurements must be obtained from the stated dimensions.