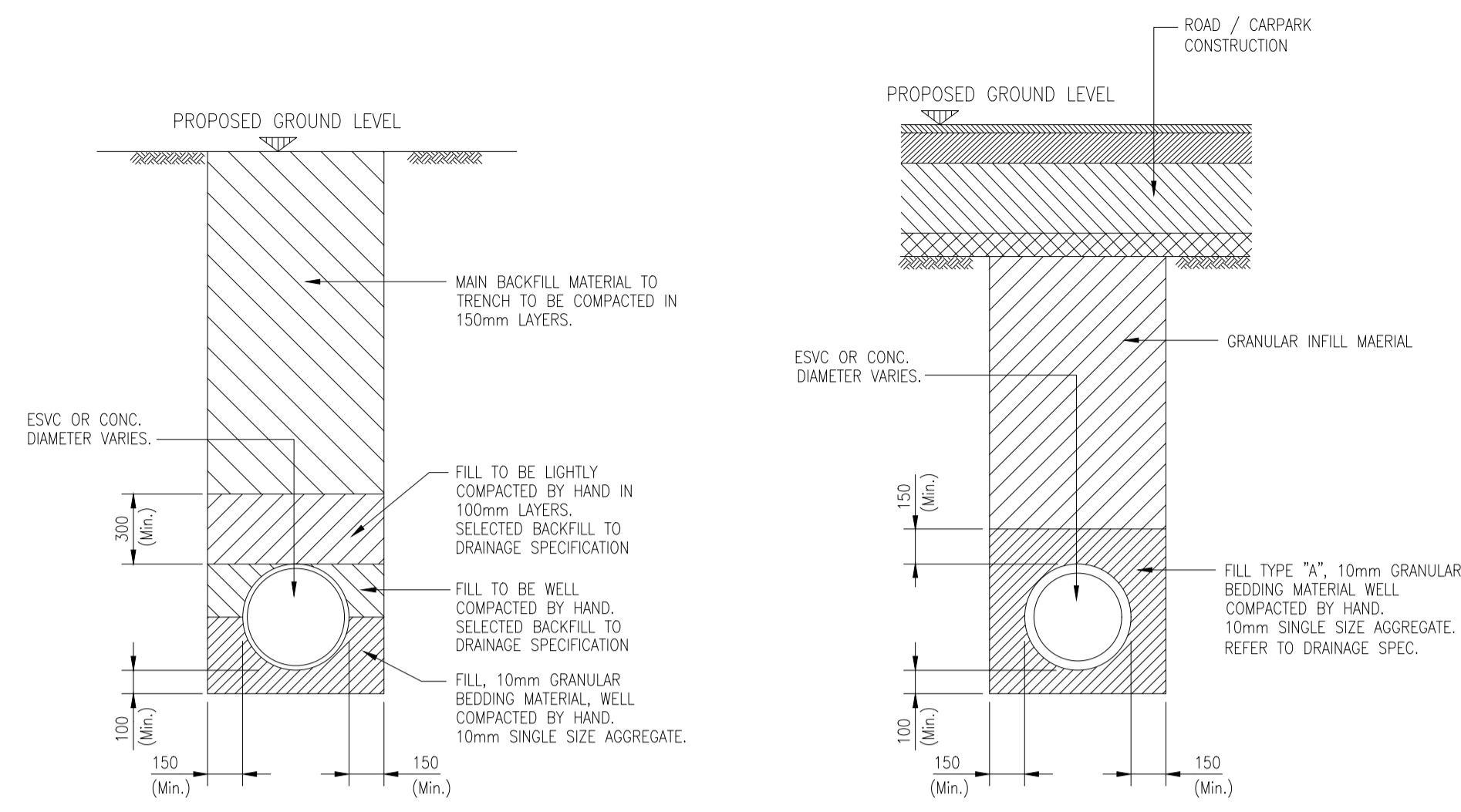


1. TYPICAL DETAILS ARE INDICATIVE ONLY AND SHOULD NOT BE USED FOR DETAILED DESIGN.

NO.	DATE	DESCRIPTION
P0	10.10.22	FIRST ISSUE FOR PLANNING
I/R	DATE	DESCRIPTION

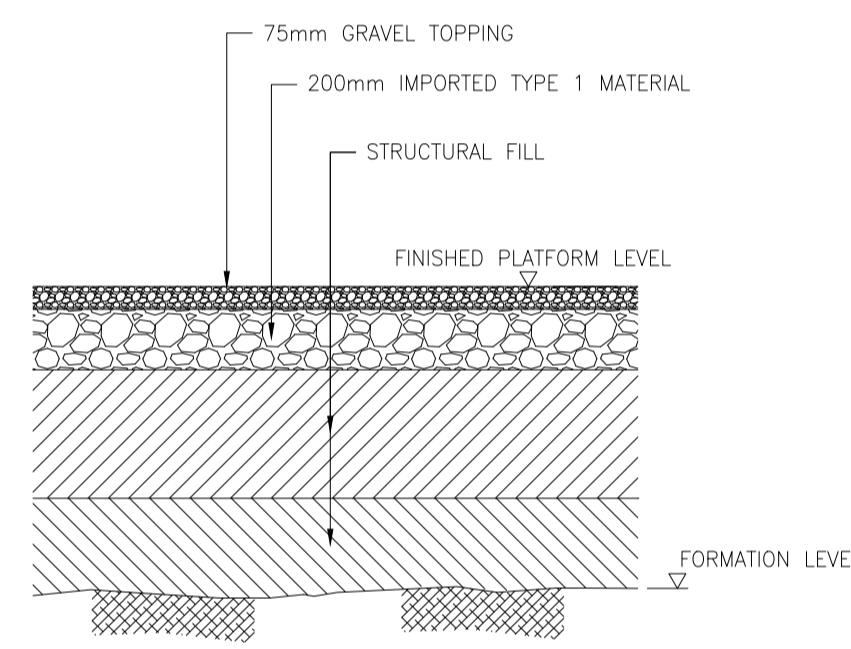


TYPICAL PIPE BEDDING DETAILS (EXCEPT BELOW ROADS & HARDSTANDING)

NOT TO SCALE

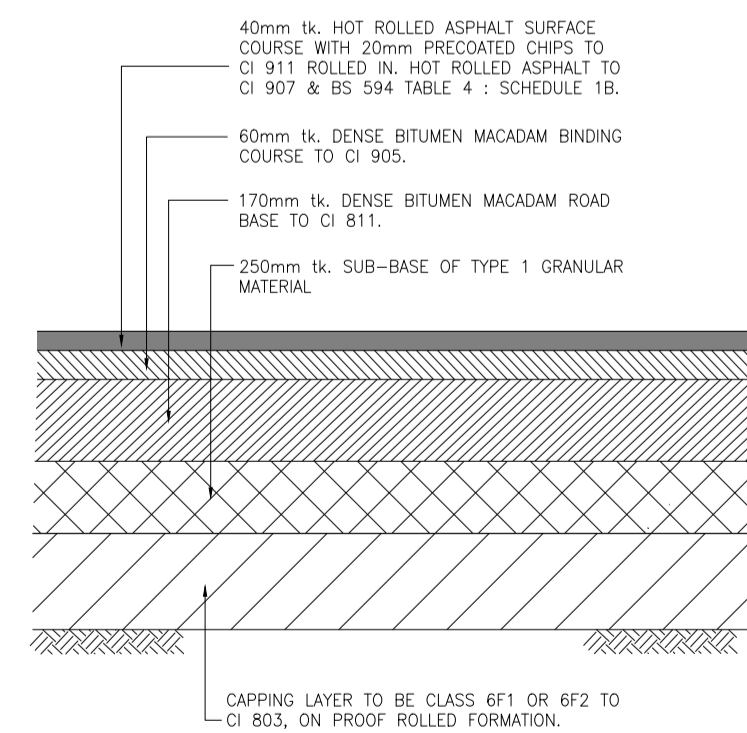
TYPICAL PIPE BEDDING DETAILS (BELOW ROADS & HARDSTANDING)

NOT TO SCALE



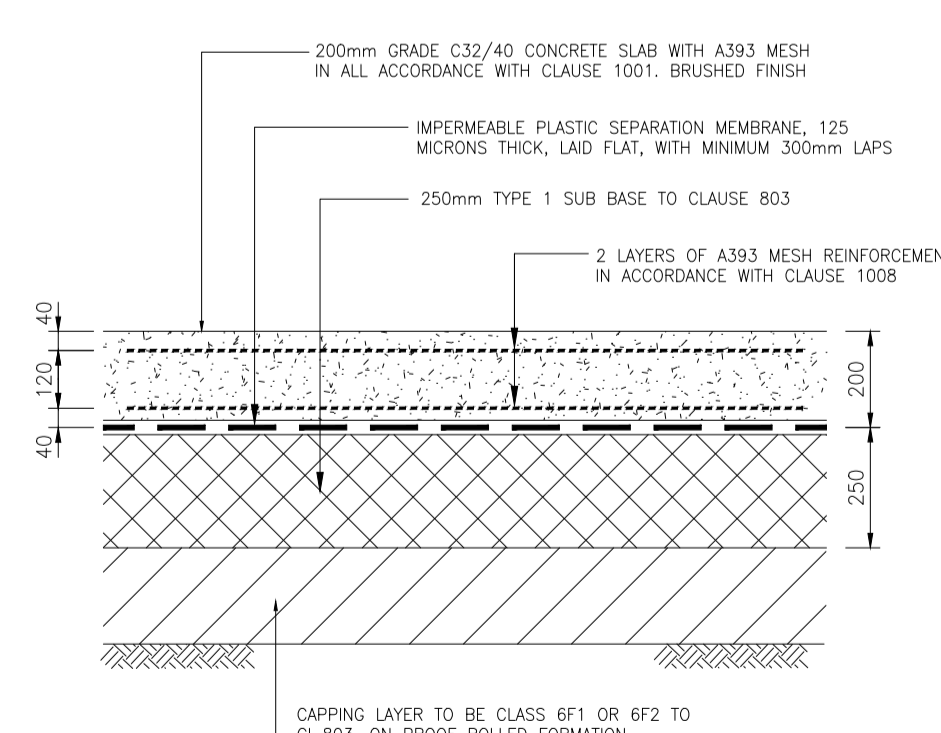
TYPICAL SUBSTATION PLATFORM CONSTRUCTION

NOT TO SCALE



TYPICAL ASPHALT ROAD CONSTRUCTION

NOT TO SCALE

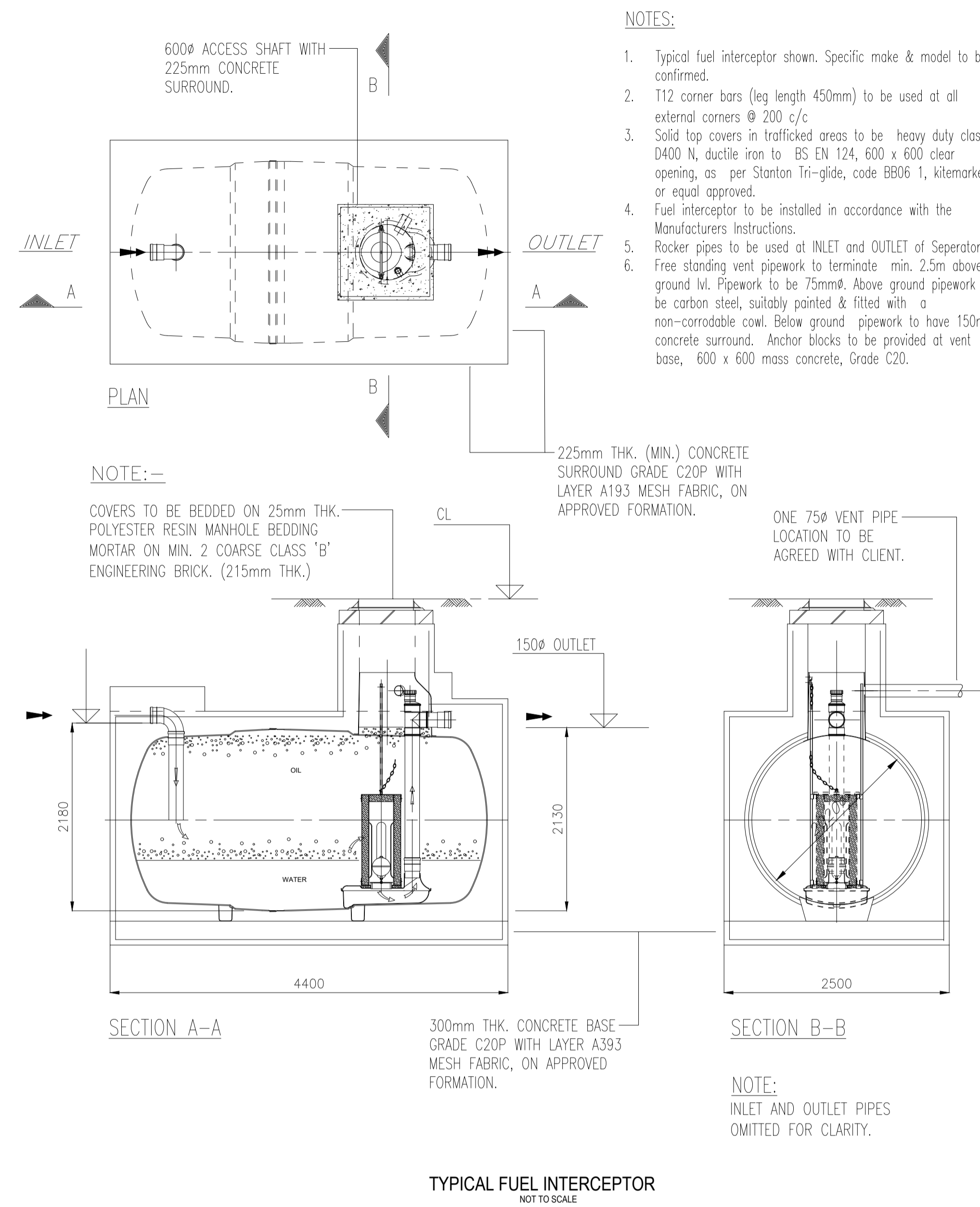


TYPICAL CONCRETE ROAD CONSTRUCTION DETAIL

SCALE 1:20

CONCRETE SLAB NOTES

1. CONCRETE TO BE C32/40 IN ACCORDANCE WITH CLAUSE 1001
2. MESH REINFORCEMENT TO BE TWO LAYERS A393 WITH 40mm ±10mm TOP/BOTTOM COVER
3. FORMATION LEVEL TO BE PROOF ROLLED AND SOFT SPOTS TO BE REMOVED AND INFILLED WITH CAPPING MATERIAL (6F1 OR 6F2) OR OTHER MATERIAL AS DIRECTED BY THE ENGINEER.



TYPICAL FUEL INTERCEPTOR

NOT TO SCALE

NOTES:

1. Typical fuel interceptor shown. Specific make & model to be confirmed.
2. T12 corner bars (leg length 450mm) to be used at all external corners @ 200 c/c
3. Solid top covers in trafficked areas to be heavy duty class D400 N, ductile iron to BS EN 124, 600 x 600 clear opening, as per Stanton Tri-glide, code BB06 1, kitemarked, or equal approved.
4. Fuel interceptor to be installed in accordance with the Manufacturers instructions.
5. Rocker pipes to be used at INLET and OUTLET of Separator.
6. Free standing vent pipework to terminate min. 2.5m above ground lv. Pipework to be 75mmØ. Above ground pipework to be carbon steel, suitably painted & fitted with a non-corrodable cowl. Below ground pipework to have 150mm concrete surround. Anchor blocks to be provided at vent base, 600 x 600 mass concrete, Grade C20.

NOTE: -

COVERS TO BE BEDDED ON 25mm THK. POLYESTER RESIN MANHOLE BEDDING MORTAR ON MIN. 2 COARSE CLASS 'B' ENGINEERING BRICK. (215mm THK.)

225mm THK. (MIN.) CONCRETE SURROUND GRADE C20P WITH LAYER A193 MESH FABRIC, ON APPROVED FORMATION.

300mm THK. CONCRETE BASE GRADE C20P WITH LAYER A393 MESH FABRIC, ON APPROVED FORMATION.

NOTE:
INLET AND OUTLET PIPES OMITTED FOR CLARITY.

This drawing has been prepared for the use of AECOM's client. It may not be used, modified, reproduced or relied upon by third parties, except as agreed by AECOM or as required by law. AECOM accepts no responsibility, and denies any liability, whatsoever, to any party that uses or relies on this drawing without AECOM's express written consent. All measurements must be obtained from the stated dimensions.