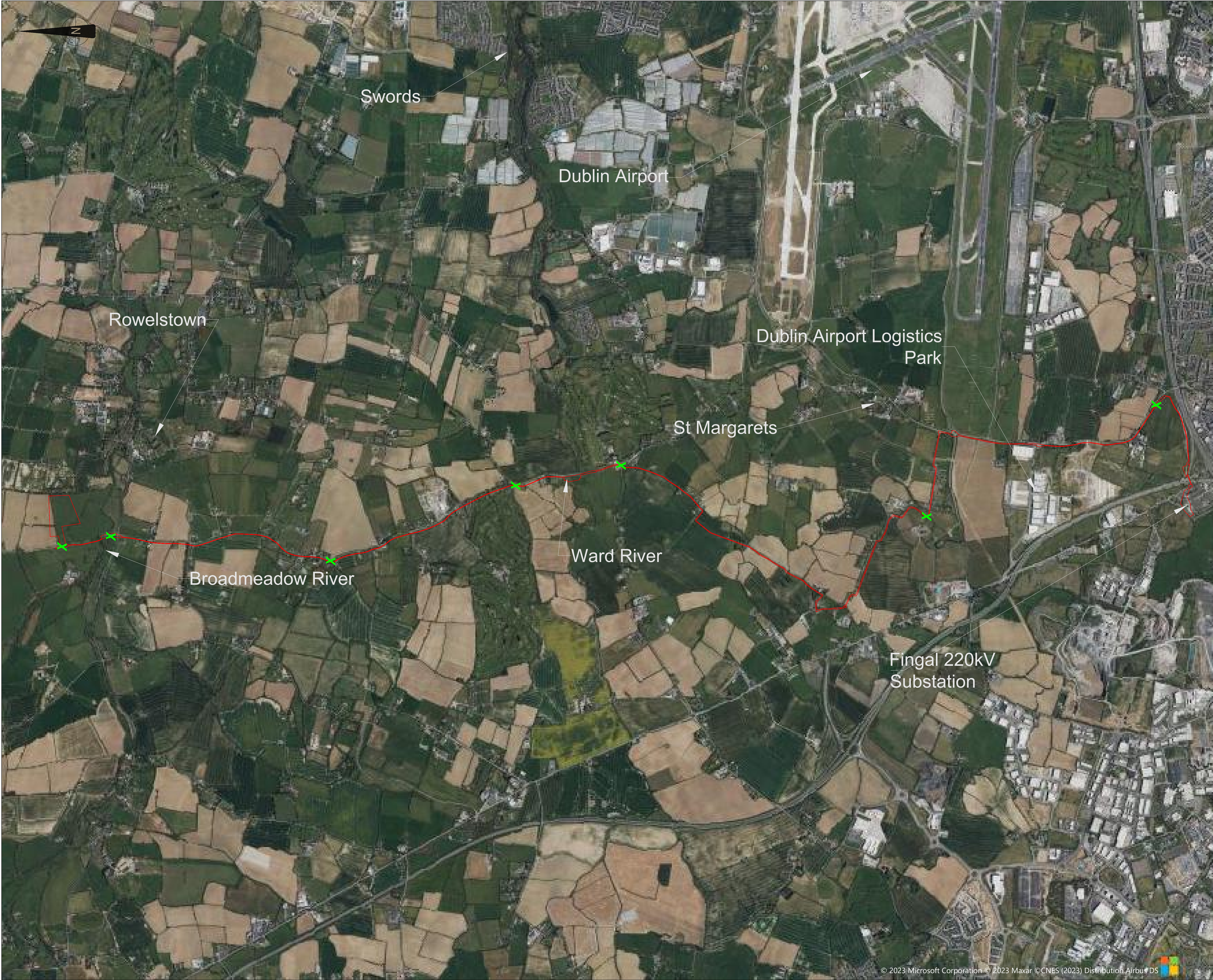


Last saved by: BERNICE CAHILL (2023-11-02) Last Plotted: 2023-12-01
 Filename: \\NA.AECOM\NET\COMPLFS\EMEA\DUBLIN-HEB\ZLEGGAC\YIED\B2FP001\DATA\DCS\PROJECTS\BP\6067534_SUMMERHILL\FIELDSTOWNS\ID\900_CAD_GIS\910_CAD\FIELDSTOWN\PLANNING\FOLDER\6067534-ACM-DWG-101.DWG
 PM Initials - Designer dk
 Checked LOB
 Approved BC



AECOM

PROJECT
 FIELDSTOWN 110 kV
 SUBSTATION & GRID
 CONNECTION

CLIENT
 ENERGIA SOLAR
 HOLDINGS LTD.



CONSULTANT
 AECOM
 Adelphi Plaza
 Georges Street Upper
 Dun Laoghaire
 County Dublin
 Ireland
 T +353 (0)1 2383100
 www.aecom.com

LEGEND
 — PROPOSED DEVELOPMENT BOUNDARY
 X SITE NOTICE LOCATION

NOTES
 1. DRAWINGS ARE FOR PLANNING ONLY

ISSUE/REVISION		
NO.	DATE	DESCRIPTION
P1	01.12.2023	RLB UPDATE
P0	02.11.2023	ISSUE
I/R	DATE	DESCRIPTION

STATUS
 FOR PLANNING

PROJECT NUMBER 6067534
SCALE 1:15000 @ A1

SHEET TITLE
 FIELDSTOWN 110kV SUBSTATION
 & GRID CONNECTION
 SITE LAYOUT

SHEET NUMBER 6067534-ACM-DWG-FT-100
REV P1

This drawing has been prepared for the use of AECOM's client. It may not be used, modified, reproduced or relied upon by third parties, except as agreed by AECOM or as required by law. AECOM accepts no responsibility, and denies any liability, whatsoever, to any party that uses or relies on this drawing without AECOM's express written consent. Do not scale this document. All measurements must be obtained from the stated dimensions.